



Alveley & Romsley Parish Council Newsletter Autumn 2019

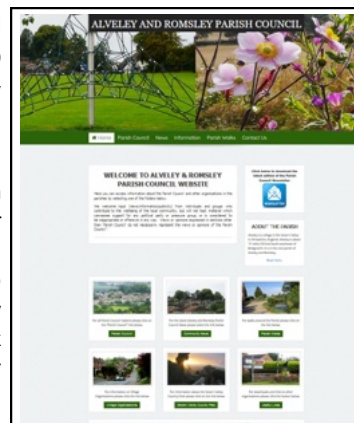


Welcome to The New Parish Council Website!

The new website has been on-line for about a year and we have been looking at ways to improve it. We want to make it more informative and to improve the layout so that you can find the information you want quickly and easily.

The new-look website should be in place by the end of September. Please log on and see what you think. www.alveleyandromsleypc.org.uk. You will need to do so to access this newsletter so you can do both in one visit. We would welcome feedback, positive or negative; if the latter, please let us know your suggested improvements.

We would like to start a picture gallery showing the delights of Alveley, Romsley, Six Ashes and Tuckhill so that everyone can see what delightful places they are. It would also be good to keep refreshing the gallery to reflect different seasons and aspects of rural life. If you can help, please send your images to the Clerk (email address over). To ensure data privacy we wouldn't be able to use photos of individuals or identifiable groups. We look forward to hearing from you.



A Reminder ? - Parish Council Newsletter

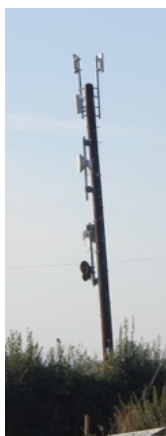


The Parish Council Newsletter is an important platform for keeping in touch with you all. In the recent past, it has been produced two or three times per year, in future we aim to issue a newsletter during the months of April, September and December. Also, just to remind you that we have now moved to a new distribution arrangement which involves:

- Publishing the Newsletter on the Parish Council website
- Providing hard copies at suitable collection points e.g. Surgery, School, Church, Village Hall, Convenience Store
- Inviting residents who can't access the Newsletter by the above methods to contact the Parish Clerk, so that alternative arrangements can be made.

Superfast Broadband Finally Comes to Romsley!!

The Airband Mast located near Pool House Farm was finally commissioned and put into service in May and residents now have the benefit of a superfast broadband service in excess of 50mb! You don't have to live in Romsley to connect to the service, simply call Airband in 01905 953819 or visit www.airband.co.uk for possible for masts to themselves, allowing line of sight to the Pool House Farm mast to receive a radio signal. Airband are seeking interested in hosting a mast, so if this is something that you might be interested in, please get in touch with Airband.



Street Lighting.

Your Parish Council owns and is responsible for maintaining all of the streetlights in the parishes. In 2014 some 30 lighting columns were reported as being substandard and in Council had previously lighting to the more that time the cost was the cost of replacing the with the latest LED units to replace them with the As this would mean having amber lighting, to use part remaining lights to LED. operation but with the help have already saved the



At the last safety inspection columns were reported as need of replacement. The considered changing our economical LED units but at considered prohibitive. As substandard columns for ones was comparable we decided later more economical units. a mixture of white and of our reserves to convert the This has been an expensive of grants and donations, we Council thousands of pounds in electricity and maintenance costs. It is expected that the conversion of all lights will be completed by the time of our next safety report in 2020 and that these savings will continue for many years to come.

Respect Our Rec.!

As a small rural community we are very lucky to have a wonderful open green space, affectionately known as the 'Rec', held in trust and managed by volunteers for everyone to use and enjoy. It has been the scene of many good times over the years with events ranging from donkey racing to charity football, Royal celebrations to school sports. This summer has seen a new grounds man setting a very high standard with his excellent maintenance leading to lots of compliments on the attractive appearance of a highly prized asset.

Sadly though there is now an increasing trend towards ignoring the few 'ground rules' which the Recreation Association committee ask everyone to observe and which are posted on signs at various points around the grounds. More serious is the anti social behaviour gradually creeping in, ranging from discarded litter to riding bikes through the children's sand pit, which could ultimately lead to the loss of what most of us take for granted. No one wants to see children hurt by running onto broken glass or perhaps becoming ill from picking up something a bit 'iffy'.

So let's keep this gem a pleasure for all of us. Walk your dogs and ride your bikes elsewhere, please put your litter into the nearest bin, maybe not break things because you can. Please appreciate our open green space, have fun and "Respect our Rec."

Play Area on Rec.



This summer the Parish Council has been upgrading the Play Area. Some old items have been retired, others have undergone repairs to bring them back to life and some new equipment has been installed to make play possible for children of all ages and abilities.

Once installation and repairs are completed we would like to enhance all our old favourites with a shiny coat of paint. To that end if there is anyone with painting skills and public liability insurance who would be willing to take on this task for us please contact our Clerk for full details regarding quotes, contracts etc.

We hope everyone will enjoy playing and keeping fit !

Your Parish Councillors - Contact Details ([R] = Romsley Councillor)

Pam Barker 781357 Chairman, **Keith Stanton** 780637 Vice Chairman, **Isley Jakeman** 07902016425, **Jennifer (Jenny) Hall** 780877, **Chris Noble** 780715, **Richard Narburgh [R]** 781180, **Samantha Potter [R]** 01299 861101, **Angela Preece** 781171, **Ben Punchard** 781807, **David Voysey** 780356, **Paul Thompson** 780376, **David Rawlinson - Clerk** 07972040818. Email: clerk@alveleyandromsley.org.uk address: 43, Church View Gardens, Kinver, Stourbridge. DY7 6EE Website www.alveleyandromsley.org.uk [Shropshire Council Helpdesk : 03456 789000]

Environmental Matters: A New Rationale for Managing Communal "Green Spaces" Within Our Village.

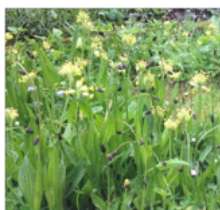
One of the duties of all Parish Councils is to have a regard to the protection of biodiversity in carrying out their functions. We, as councillors, are becoming increasingly aware of the importance of using the particular character of our parish to create a number of diverse habitats to enhance wildlife.

This precious 'biodiversity' is in great need of careful protection and constant management. The numbers of even once common species of butterflies and meadow plants like Lady's Smock and Cowslips have declined dramatically over recent years. If our children are to have the same chances to enjoy the natural world as we have, we must take action to stop these declines and promote biodiversity.

There has been an assumption made by local decision-makers in the past that all green areas within our village should be neat and tidy. This has entailed a mowing regime throughout the growing season where anything remotely resembling nature is "manicured" out of existence.

Any plan for biodiversity needs to be accompanied by a certain amount of explanation and re-educating some members of the parish to understand that the failure to mow all areas to establish a "lawn-style" appearance is not equivalent to poor local governance. Some simple changes in management might include:

1. Creation of nectar "service stations" throughout corners of greenery by enhancing [certain plants which are "bee friendly"](#)
2. Varying the mowing regime on patches of mown grass verges to [encourage wild flowers](#) to flower and set seed.
3. Letting patches of grass to grow wild around the base of trees.
4. Leaving small piles of wood around out of the way corners to encourage small mammals and invertebrates.



Creating wild-flower mini-meadows is not a simple quick-fix process. This example has been produced by not mowing early in the year until the Spring flowering plants have set seed and the seeds then stamped into the earth. Mowing from then can then be resumed until the end of the growing season.

This stretch of former "lawn" now abounds with Cowslips and narrow-leaved plantains developed by a slightly different pattern of mowing.

One of the important things to remember is to try and reduce the fertility of the soil so that vigorous grasses like "Rye" grass do not take over and shade out the variety of wild flowers. All subsequent mowing must include removing the grass cuttings.



Rethink what we mean by the term "weed"
A tidy environment is often "nature unfriendly"
Learn to respect all insects – they're vital

["Bee Friendly" plants don't have to be exotic or difficult to grow. This stand of purple toadflax has just grown from seed and has "parked" itself in some gravel...it may be a "weed" to some people....but it is crawling with honey bees, bumbles and hoverflies - all using the simple flowers to get nectar.](#)

Other nectar sources include foxgloves, mint, dandelions, buttercups, clover, parsley, and herbs like thyme and oregano. Many garden plants which are highly cultivated have too complex flower forms for insects to access easily. Hoverflies have sponge-like mouth parts that can't profit from tubular flowers like honeysuckle.



Combating Rural Crime

The Parish Council is concerned about the increase in rural crime across the West Mercia area and is working with the South Shropshire Safer Neighbourhood Team to make our communities as safe and secure as possible.

We have had a recent update from the Police on 'Smartwater' security; it has clearly reduced property theft in nearby towns and villages and we want to avoid travelling criminals moving into this area. The latest scheme would involve no cost to individual households but would need the majority of households to get involved. What do you think?

We are also looking at the possibility of CCTV in some parts of Alveley. The Safer Neighbourhood Team will be coming to our next Parish Council meeting on 1st October to talk about this. We are aware that there are some controversial aspects of CCTV and, again, would welcome your views.

Planning Our Future

Shropshire Council has eighteen place plans. Alveley and Romsley is

covered by the Bridgnorth and Surrounding Area Place Plan. Place Plans focus on infrastructure needs such as roads, and other facilities including transport, flood defence, schools and education, medical, recreational, sporting and open spaces. Shropshire Council is reviewing and updating its Place Plans.

The Parish Council has therefore carried out an initial review of current issues and priorities, and has made a new submission. This can be found on the website in the Parish Council/Policies and Procedures folder. We would welcome the views of all residents on this issue and will be consulting formally on our proposals as part of our aspiration to develop a new

Parish Plan. Such a plan, if it is based on genuine community engagement, will be invaluable if and when the proposal to designate Alveley as a community hub, is confirmed.

So, please get engaged and let us have your views - by email, letter or text. Thanks.

A message From Your Shropshire Councillor—Tina Woodward.

It has been a good growing season and the hedges and trees appear to have put on considerable growth. Therefore, I am receiving an increase in the number of concerns regarding hedges which are encroaching on our village footways. There are also concerns with overhanging tree branches. It would be really welcomed if hedges could be maintained to avoid encroaching on the footways and overhanging trees branches reduced accordingly.

The other main issue is once again parking on the footways, I am not in any way condoning it. Would drivers please leave enough space to the side of their vehicles to allow footway users access to pass parked vehicles. It makes it so much easier and safer in my opinion.

Please could those collecting children from school not park opposite the school near to the junction (the road to the shops) as it makes it very difficult for other road users and pedestrians alike. The same goes for people parking by the Medical Practice: please try not to park either side of the access to the Practice, as it is causing concerns regarding visibility for drivers. Thank you.

